

Stair angles simplify stair construction. There is no need to calculate and notch stair stringers. Stronger and safer than wood blocking, and the angle and fasteners are hidden from view.

**Materials:** 12 gauge

**Finish:** G-185 galvanizing

**Options:** See chart for Corrosion Finish Options

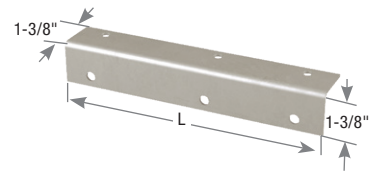
**Codes:** IBC, FL, LA

**Installation:**

- Use all specified fasteners. See Product Notes, page 18.
- MiTek WS15-EXT (1/4" dia. x 1-1/2" long) structural wood screws are not supplied with SCA angles.
- Use the SCA9-TZ for single 2x10 stair treads. Use the SCA10-TZ for double 2 x 6 stair treads.
- To calculate stair construction do the following:
  1. Find the number of steps needed by dividing the vertical drop in inches from the deck surface to grade by 7. Round off to the nearest whole number. (Ex: Vertical drop of 39" divided by 7" equals 5.57 rounded off is 6)
  2. Find the step rise by dividing the vertical drop by the number of steps (39" divided by 6 = 6.5")
  3. Find the step run by measuring the depth of your tread board (Ex: (2) 2x6s with 1/4" gap will have a run of 11-1/4")
  4. Find the stairway span by multiplying the run by the number of treads minus one (Ex: 11-1/4" x 5 = 56-1/4")
- Using the above calculations, mark stair angle locations on each stringer. Attach a stair angle to the inside of each stringer at the marked locations. Attach stringers to deck rim joist and railing posts. Position treadboards on angles and fasten from below.



**Typical SCA9-TZ installation**



**SCA9-TZ**



**Typical SCA10-TZ installation**



MiTek USP Stock No.	Ref. No.	Steel Gauge	L (in)	Fastener Schedule <sup>2,3</sup>		DF/SP Allowable Loads (Lbs.) <sup>1</sup>		Corrosion Finish	Code Ref.
				Qty	Type	Download 100%			
SCA9-TZ	TA9Z	12	9	6	WS15-EXT	445			IBC, FL, LA
SCA10-TZ	TA10Z	12	10	8	WS15-EXT	595			

1) Loads assume rise over run of 7/11.

2) MiTek's WS15-EXT structural wood screws are 1/4" dia. x 1-1/2" long and are not included with SCA angles.

3) HDG lag screws may be substituted for specified WS15-EXT structural wood screws with no load reduction.

New products or updated product information are designated in **blue font**.

**Corrosion Finish** ■ Stainless Steel ■ Gold Coat ■ HDG ■ Triple Zinc